

Lasernet 10.

Lasernet Monitor 10

Adam McStravick, Torben Pedersen
Revision 4
2025-10-24

Contents.

1 Introduction.....	3
1.1 Who Should Use This Guide?	3
2 Terms of Use.	4
3 Lasernet Monitor.....	5
3.1 Purpose	5
3.2 Working with Lascript Monitor	6
3.2.1 Monitoring Servers	6
3.2.2 Connect to Lascript	6
3.2.3 Server Status	8
3.2.4 Menu Bar Options.....	10
3.2.5 Toolbar Options	11
3.2.6 Tools in the Log Window	16
3.2.7 Log.....	18
3.2.8 Insights (Performance and Transaction Counters)	18
3.2.9 Performance	19
3.2.10 Transactions	20
3.2.11 Grab.....	21

1 Introduction.

1.1 Who Should Use This Guide?

This guide is written for the Lasernet system administrator. It explains how to use the Lasetnet Monitor application.

2 Terms of Use.

No part of this publication may be reproduced, transmitted, transcribed, or translated into any language in any form by any means without the prior written permission of Formpipe Software. The information in this manual is subject to change without notice. Any company names or data is fictive unless otherwise stated.

Formpipe Software shall not be liable for any loss or damage whatsoever arising from the use of this manual and the information contained therein (including errors or omissions).

Trademarks of other companies mentioned in this document appear for identification purposes only and are the property of their respective companies.

© 2025 Formpipe Software.

3 Lasernet Monitor

3.1 Purpose

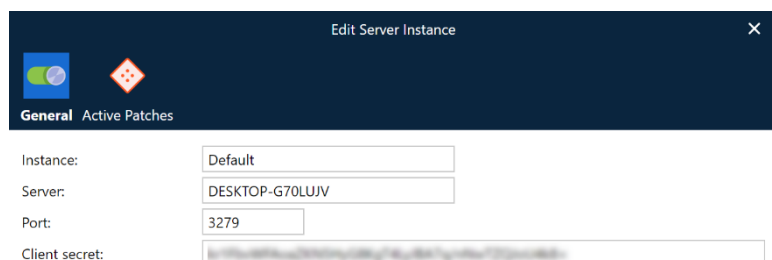
The Lascript Monitor can be used by system administrators to determine the status of the processes and forms flow within the Lascript Server. It can also be used for maintenance tasks such as starting or stopping the service and retrying failed jobs.

3.2 Working with Lasernetet Monitor

Log processed by the Lasernetet 10 service can be viewed in the monitor window. This can either be the live log for jobs currently being processed, or log data which has been saved to disc for older jobs that have already been processed.

3.2.1 Monitoring Servers

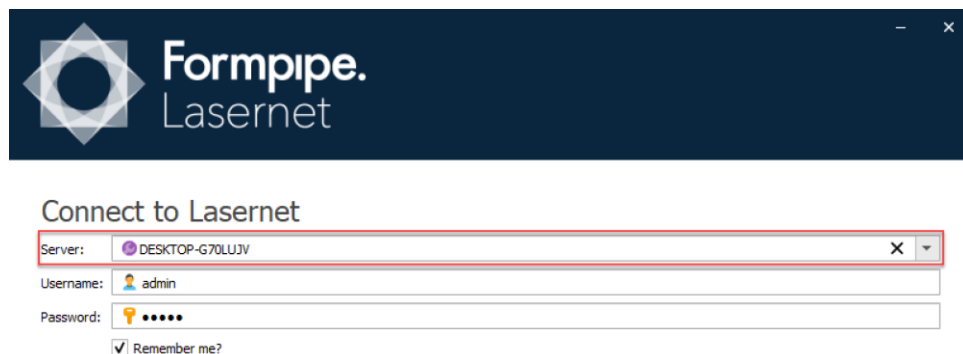
From the Lasernetet Monitor you can connect to Lasernetet servers in your local network. Communication between the monitor and the Lasernetet services is established via an encrypted TCP/IP connection on the port number defined in the Server Instance settings of the Lasernetet Config Server.



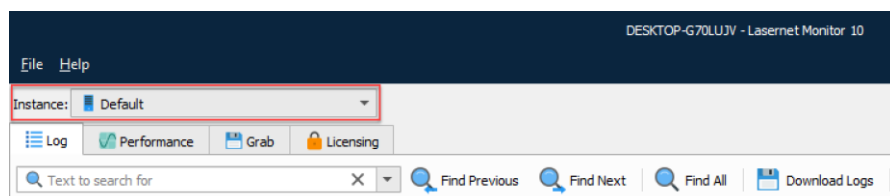
If the monitor is installed on a different computer to that of the Lasernetet service, please check that your server firewall settings will allow the monitor to connect to the service via the defined port number.

3.2.2 Connect to Lasernetet

To monitoring the server log it is required that you start the Lasernetet Monitor, connect to the Lasernetet Server with your credentials, select an accessible server in the dropdown in the Connect to Lasernetet login screen



and then select an Instance from the Lasernetet Monitor application.



You are now ready to access the monitor log, search for log and fetch oldest and newest messages.

localhost - Lasernet Monitor 10

File Help

Instance: Default

Log Grab Licensing

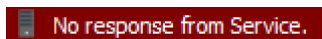
Text to search for Find Previous Find Next Find All Download Logs Open Logs Fetch Oldest Fetch Newest Clear Log

Type	Time	Module	Message
System	2025-09-23 08:38:59.240	Lasernet Service	Loading module webinputport.dll
System	2025-09-23 08:38:59.240	Lasernet Service	Loading module webservicesmodule.dll
System	2025-09-23 08:38:59.240	Lasernet Service	Loading module winprintingportport.dll
System	2025-09-23 08:38:59.240	Lasernet Service	Loading module winprintingportport.dll
System	2025-09-23 08:38:59.240	Lasernet Service	Loading module xlsxmergerengine.dll
System	2025-09-23 08:38:59.240	Lasernet Service	Loading module xmlmergerengine.dll
System	2025-09-23 08:38:59.240	Lasernet Service	Loading module xmlsecurity.dll
System	2025-09-23 08:38:59.240	Lasernet Service	Loading module xmlsplitterengine.dll
System	2025-09-23 08:38:59.240	Lasernet Service	Loading module xmltransformerengine.dll
System	2025-09-23 08:38:59.255	Lasernet Service	Loading module xmlvalidatorengine.dll
System	2025-09-23 08:38:59.255	Lasernet Service	Lasernet Printer Port 10 port monitor already installed
System	2025-09-23 08:38:59.255	Lasernet Service	Lasernet File Directory Port port monitor already installed
System	2025-09-23 08:38:59.255	Lasernet Service	Lasernet Print Processor (Windows NT x86) print processor already installed
System	2025-09-23 08:38:59.255	Lasernet Service	Lasernet Print Processor (Windows x64) print processor already installed
System	2025-09-23 08:38:59.255	Lasernet Service	Lasernet EMF (Windows NT x86) printer driver already installed
System	2025-09-23 08:38:59.255	Lasernet Service	Lasernet EMF (Windows x64) printer driver already installed
System	2025-09-23 08:38:59.255	Lasernet Service	Lasernet Text Only (Windows NT x86) printer driver already installed
System	2025-09-23 08:38:59.255	Lasernet Service	Lasernet Text Only (Windows x64) printer driver already installed
System	2025-09-23 08:38:59.255	Lasernet Service	Unable to find configuration in C:\ProgramData\Formpipe Software\Lasernet 10\Service\Default\CurrentConfiguration
System	2025-09-23 08:51:30.486	Lasernet Service	Switching to transferred configuration..
System	2025-09-23 08:51:31.080	Lasernet Service	Loading configuration from 'C:\ProgramData\Formpipe Software\Lasernet 10\Service\Default\Configuration\8b6a96d3-7e3e-4f54-9110-bf6bae0cb4a1'...
System	2025-09-23 08:51:31.502	Lasernet Service	Configuration loaded
System	2025-09-23 08:51:31.502	Lasernet Service	Installing font resources
System	2025-09-23 08:51:31.549	Lasernet Service	Starting configuration...
System	2025-09-23 08:51:31.564	Lasernet Service	Logfile in C:\ProgramData\Formpipe Software\Lasernet 10\Service\Default
System	2025-09-23 08:51:31.564	Lasernet Service	This single server is not part of a failover setup.
System	2025-09-23 08:51:31.564	Lasernet Service	Configuration Started!
Debug	2025-09-23 08:51:31.564	Lasernet Service	Database location: 'C:\ProgramData\Formpipe Software\Lasernet 10\Service\Default\Databases\Lasernet Service.mdf'
Debug	2025-09-23 08:51:33.254	Lasernet Service	Database created
Debug	2025-09-23 08:51:33.261	Lasernet Service	Migrating tables to version 10000...
Debug	2025-09-23 08:51:33.549	Lasernet Service	Tables migrated.
Job	2025-09-23 08:51:33.803	Lasernet Service	DM.Upload.Module.DMUploadModule - Disposing engine instance: 11a7d342-d6c2-4479-95ce-7d8e6adf1913
System	2025-09-23 08:51:33.830	Lasernet Service	Starting engine and output ports..
System	2025-09-23 08:51:33.830	Lasernet Service	Starting input ports..
Debug	2025-09-23 08:51:33.830	File Input - File Input 1	Starting 1 File Input Workers...
System	2025-09-23 08:51:33.830	Lasernet Service	Modules started.
Debug	2025-09-23 08:51:33.835	DatabaseCleaner	DatabaseCleanup will run automatically again at 9/24/2025 1:00 AM.
System	2025-09-23 08:51:33.835	Lasernet Service	Processing Started!

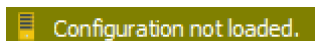
Ready to process jobs.

3.2.3 Server Status

The server status is present at the bottom of the monitor.

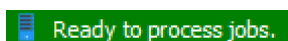


Service is not running



Service is running, but configuration is not loaded. Common reasons are:

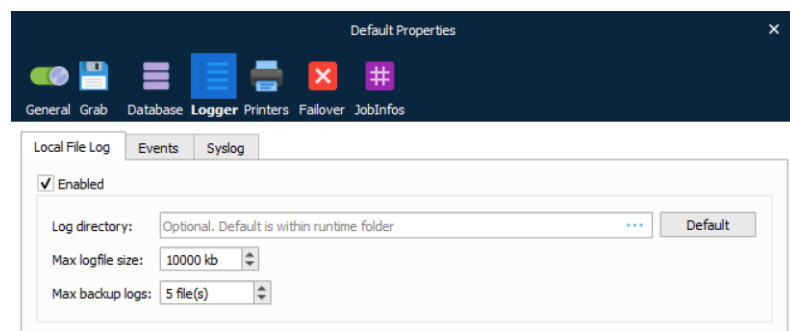
- Service is started without a configuration
- Cannot load a valid configuration
- Processing not started because server is part of failover setup



Service is running and ready to process jobs

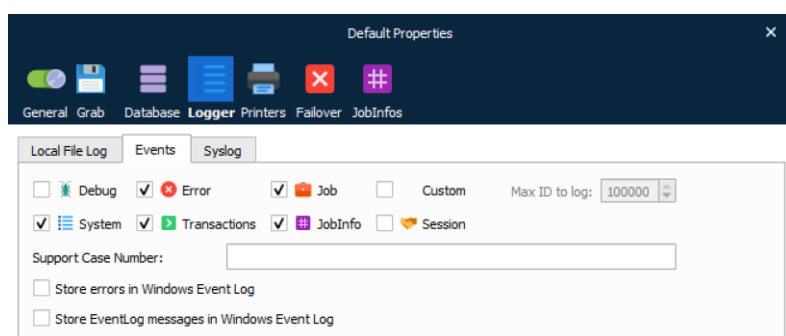
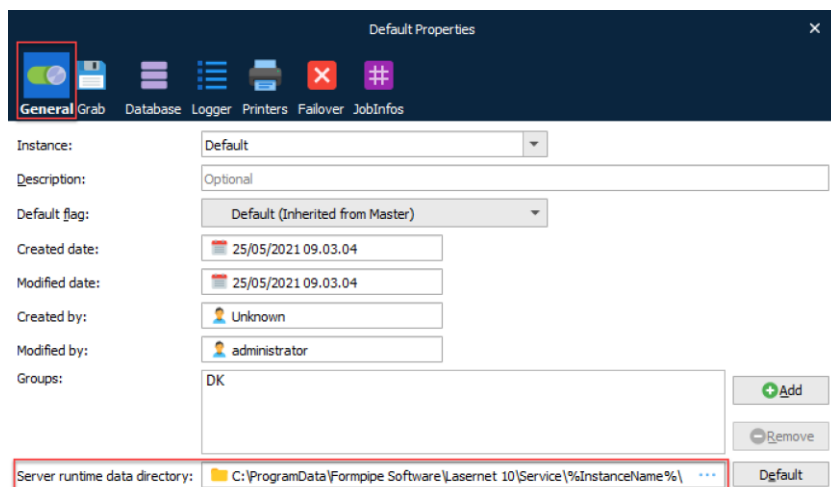
Configuring the Log

The Lasernet Developer allows you to set the options for where the log files are stored on the server as well as settings for the number of log files to be saved, file sizes and log event types.



Log data can be used for debugging, error handling, job tracing etc. You can customize the log events you want to monitor and save, which can reduce the number of log lines saved to file and shown in the monitor window.

The log directory is as default set to the value of the server runtime folder and it is optional to set to a custom value. The default server runtime data directory folder can be found in the General tab of the Instance.



You can also create your own log messages and levels from script. More info about the logger class is available in the Scripting manual.

The logger class supports a list of predefined log numbers or you can create a range from 100 and above for your own personal use.

EID_SYSTEM = 0

EID_DEBUG = 1

EID_ERROR = 2

EID_JOB = 10

Values below 100 are reserved for future use, but values from 100 and above may be used for any custom message you want.

```
logger.logEvent(EID_DEBUG, 'The value is now: ' + job.getJobInfo('value'));
```

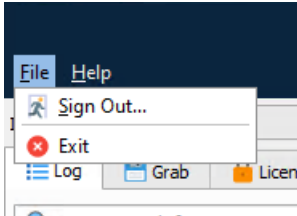
```
logger.logEvent(999, 'My custom message');
```

In the logger settings, defined in the Lasernet Developer, you can turn an event ID higher than a defined number on or off via the setting “Max ID to log”. This is very convenient in a live/test environment, where user defined logs are mostly used for testing.

3.2.4 Menu Bar Options

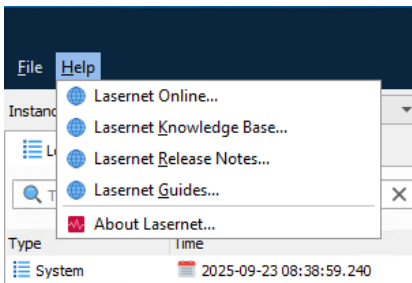
File

From the menu bar you can **Sign Out** or **Exit** the monitor. More information about these options can be found in the section about the Toolbar options.

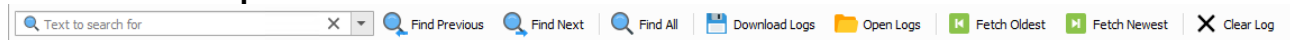


Help

This option redirects to the Lasernet site as well as showing information about the current Lasetnet version.

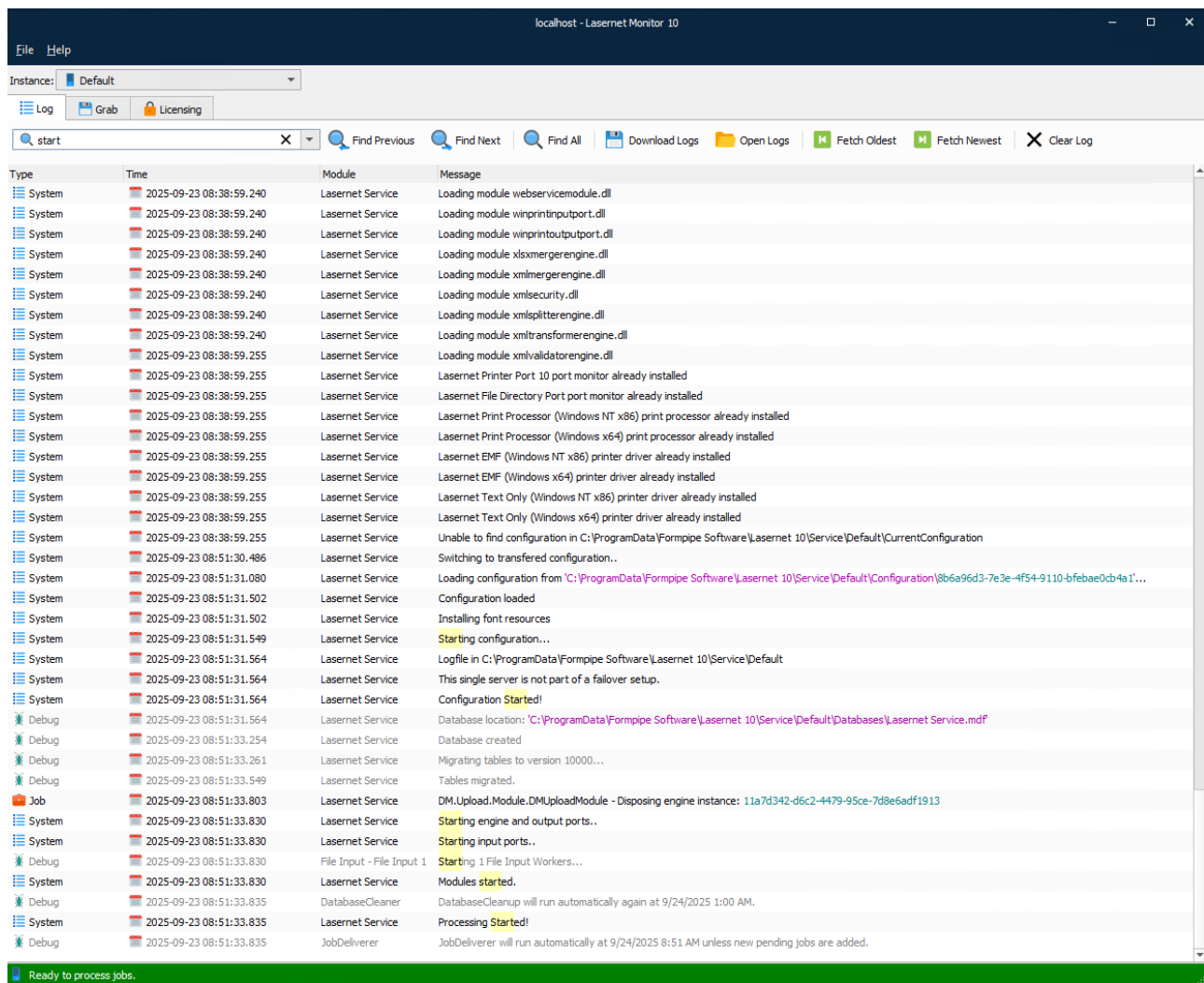


3.2.5 Toolbar Options



Text to Search For

Type a text to search for in the monitor log. Text strings are not case-sensitive. Click **x** to clear the field.

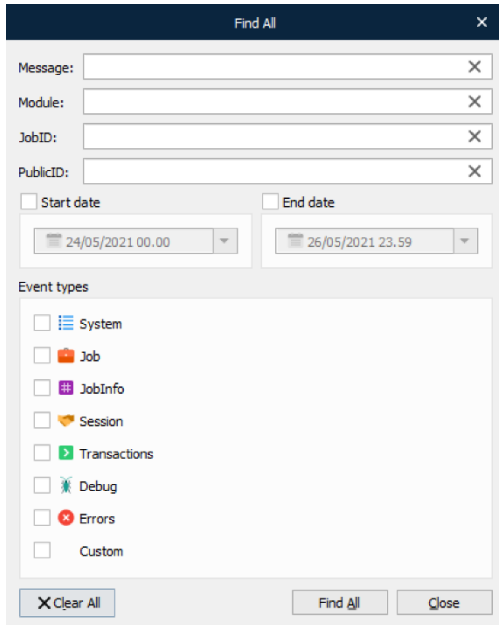


Find Previous and Find Next

Click **Find Previous** to scroll monitor log to previous found string or click **Find Next** to scroll to the next found string.

Find All

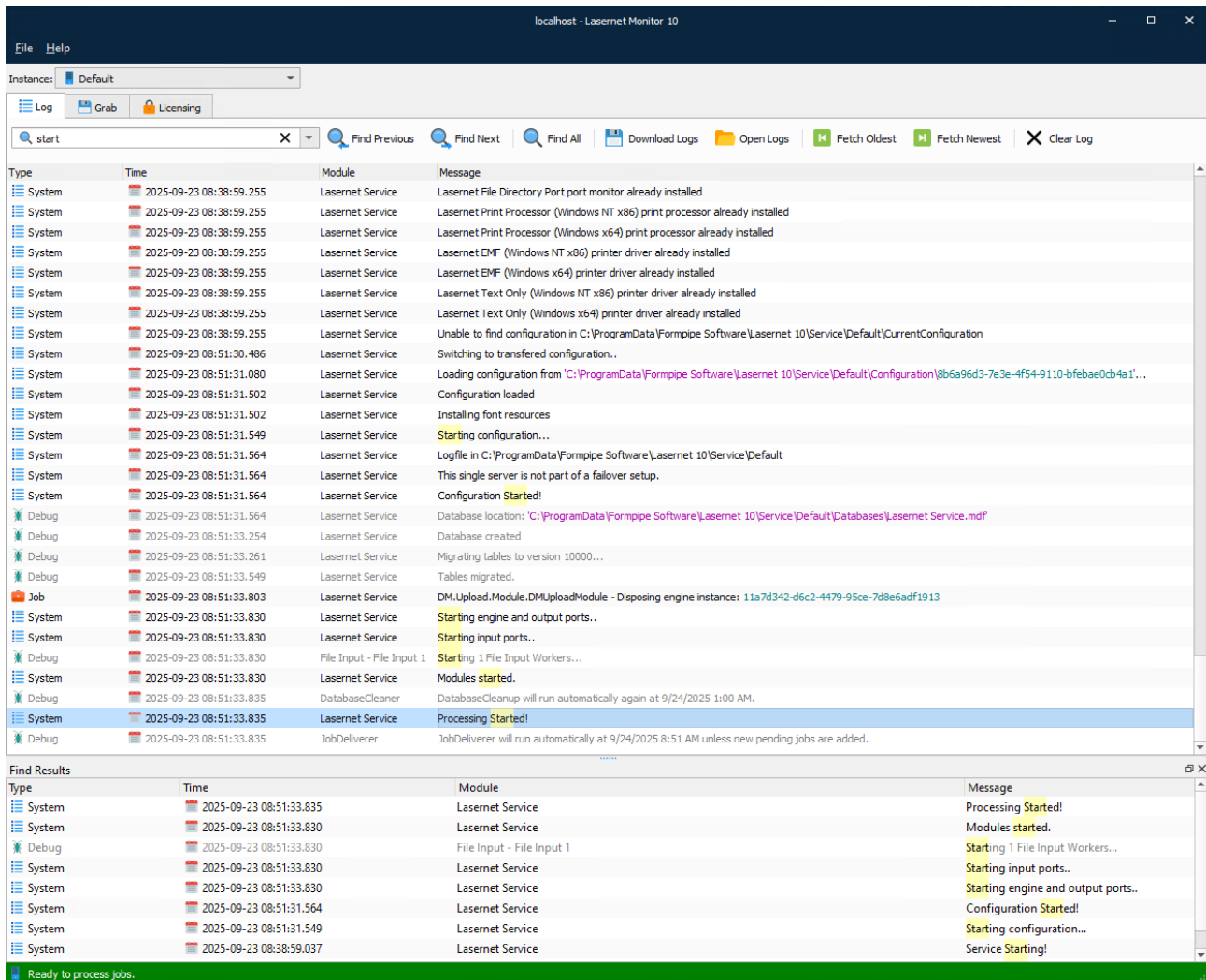
Click **Find All** enter an enhanced search and filter function. A Find All dialog will appear for more accurate results.



The screenshot shows a 'Find All' dialog box with the following elements:

- Search fields: Message, Module, JobID, PublicID (each with a clear 'X' button).
- Date range filters: Start date (24/05/2021 00.00) and End date (26/05/2021 23.59).
- Event types list:
 - System
 - Job
 - JobInfo
 - Session
 - Transactions
 - Debug
 - Errors
 - Custom
- Buttons: Clear All, Find All, Close.

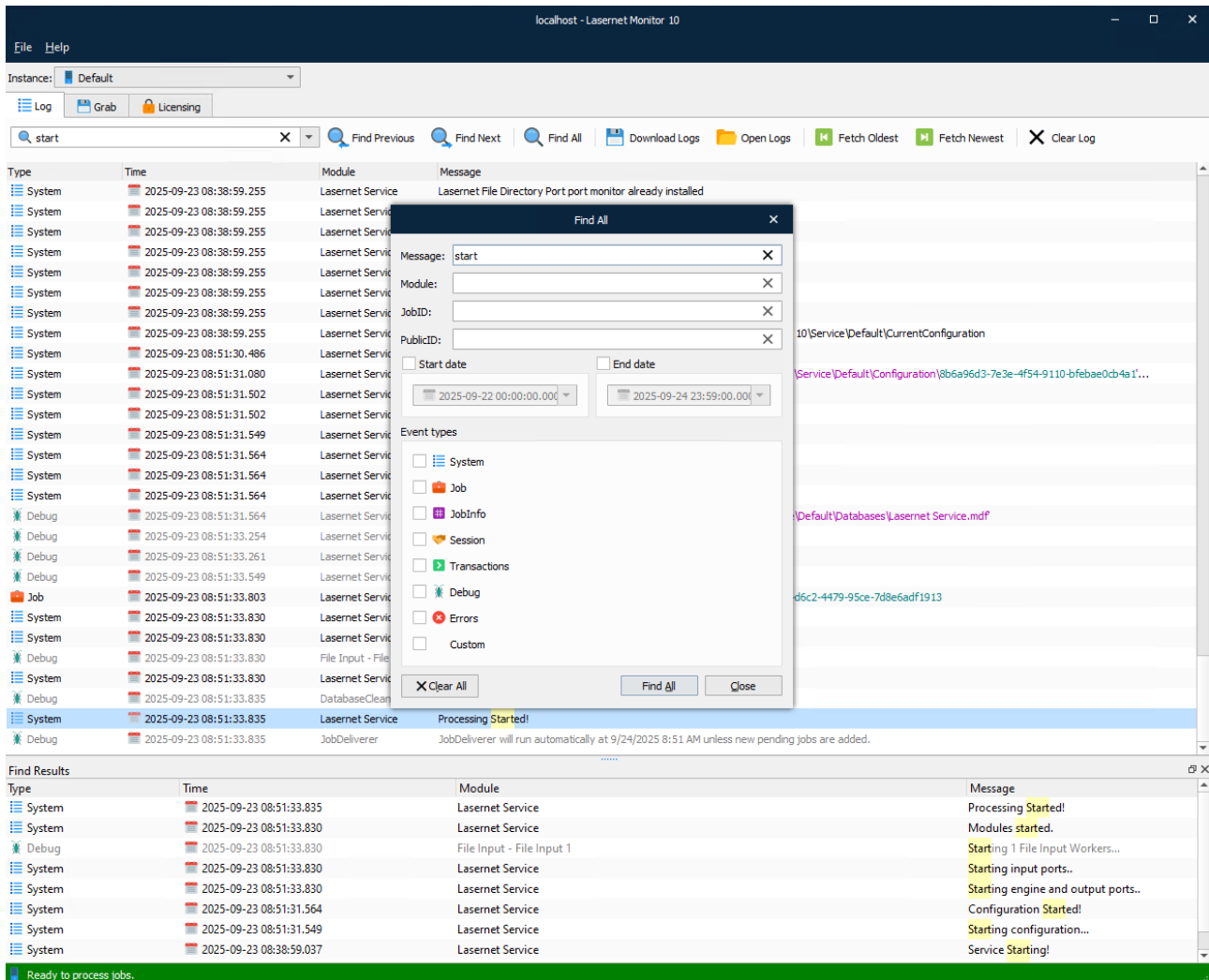
Click the **Find All** button in the **Find All** dialog and a lower pane will show all the find results sorted with the newest log entries first in the list. Double click on each message line in the lower pane to bring focus on the log message in the upper pane.



The screenshot displays the 'localhost - Lasetnet Monitor 10' application. The main log pane shows a series of events from 2025-09-23 08:38:59.037 to 2025-09-23 08:51:33.835. The 'Find Results' pane at the bottom shows a filtered list of events, with the search criteria 'start' applied. The filtered results include messages such as 'Processing Started!', 'Modules started.', 'Starting 1 File Input Workers...', 'Starting input ports..', 'Starting engine and output ports..', 'Configuration Started!', 'Starting configuration...', and 'Service Starting!'.

Type	Time	Module	Message
System	2025-09-23 08:38:59.255	Lasernet Service	Lasernet File Directory Port port monitor already installed
System	2025-09-23 08:38:59.255	Lasernet Service	Lasernet Print Processor (Windows NT x86) print processor already installed
System	2025-09-23 08:38:59.255	Lasernet Service	Lasernet Print Processor (Windows x64) print processor already installed
System	2025-09-23 08:38:59.255	Lasernet Service	Lasernet EMF (Windows NT x86) printer driver already installed
System	2025-09-23 08:38:59.255	Lasernet Service	Lasernet EMF (Windows x64) printer driver already installed
System	2025-09-23 08:38:59.255	Lasernet Service	Lasernet Text Only (Windows NT x86) printer driver already installed
System	2025-09-23 08:38:59.255	Lasernet Service	Lasernet Text Only (Windows x64) printer driver already installed
System	2025-09-23 08:38:59.255	Lasernet Service	Unable to find configuration in C:\ProgramData\Formpipe Software\Lasernet 10\Service\Default\CurrentConfiguration
System	2025-09-23 08:51:30.486	Lasernet Service	Switching to transferred configuration..
System	2025-09-23 08:51:31.080	Lasernet Service	Loading configuration from 'C:\ProgramData\Formpipe Software\Lasernet 10\Service\Default\Configuration\8b6a95d3-7e3e-4f54-9110-bfeb0c4a1...
System	2025-09-23 08:51:31.502	Lasernet Service	Configuration loaded
System	2025-09-23 08:51:31.502	Lasernet Service	Installing font resources
System	2025-09-23 08:51:31.549	Lasernet Service	Starting configuration...
System	2025-09-23 08:51:31.564	Lasernet Service	Logfile in C:\ProgramData\Formpipe Software\Lasernet 10\Service\Default
System	2025-09-23 08:51:31.564	Lasernet Service	This single server is not part of a falover setup.
System	2025-09-23 08:51:31.564	Lasernet Service	Configuration Started!
Debug	2025-09-23 08:51:31.564	Lasernet Service	Database location: 'C:\ProgramData\Formpipe Software\Lasernet 10\Service\Default\Databases\Lasernet Service.mdf'
Debug	2025-09-23 08:51:33.254	Lasernet Service	Database created
Debug	2025-09-23 08:51:33.261	Lasernet Service	Migrating tables to version 10000...
Debug	2025-09-23 08:51:33.549	Lasernet Service	Tables migrated.
Job	2025-09-23 08:51:33.803	Lasernet Service	DM.Upload.Module.DMUploadModule - Disposing engine instance: 11a7d342-d6c2-4479-95ce-7d8e6adf1913
System	2025-09-23 08:51:33.830	Lasernet Service	Starting engine and output ports..
System	2025-09-23 08:51:33.830	Lasernet Service	Starting input ports..
Debug	2025-09-23 08:51:33.830	File Input - File Input 1	Starting 1 File Input Workers...
System	2025-09-23 08:51:33.830	Lasernet Service	Modules started.
Debug	2025-09-23 08:51:33.835	DatabaseCleaner	DatabaseCleanup will run automatically again at 9/24/2025 1:00 AM.
System	2025-09-23 08:51:33.835	Lasernet Service	Processing Started!
Debug	2025-09-23 08:51:33.835	JobDeliverer	JobDeliverer will run automatically at 9/24/2025 8:51 AM unless new pending jobs are added.

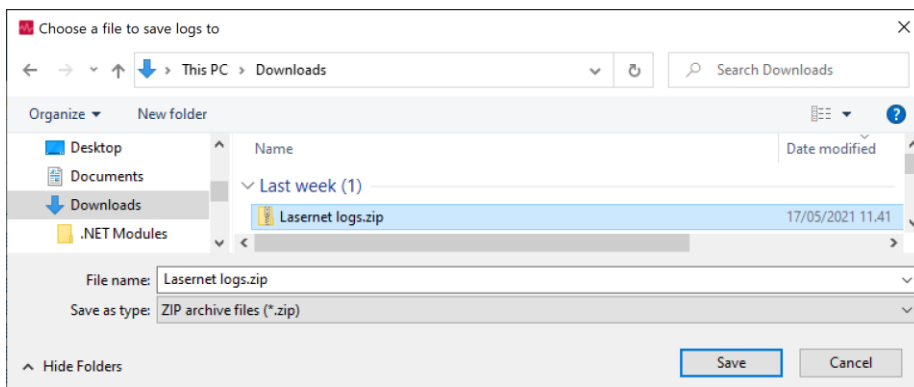
To filter the find results in the lower pane, type any message, module name, JobID and/or PublicID that may occur in the log. You can also specify a start date and/or end data to filter the find results or select to show specific type of events.



Click the **Clear All** button to reset entered values in the **Find All** dialog.

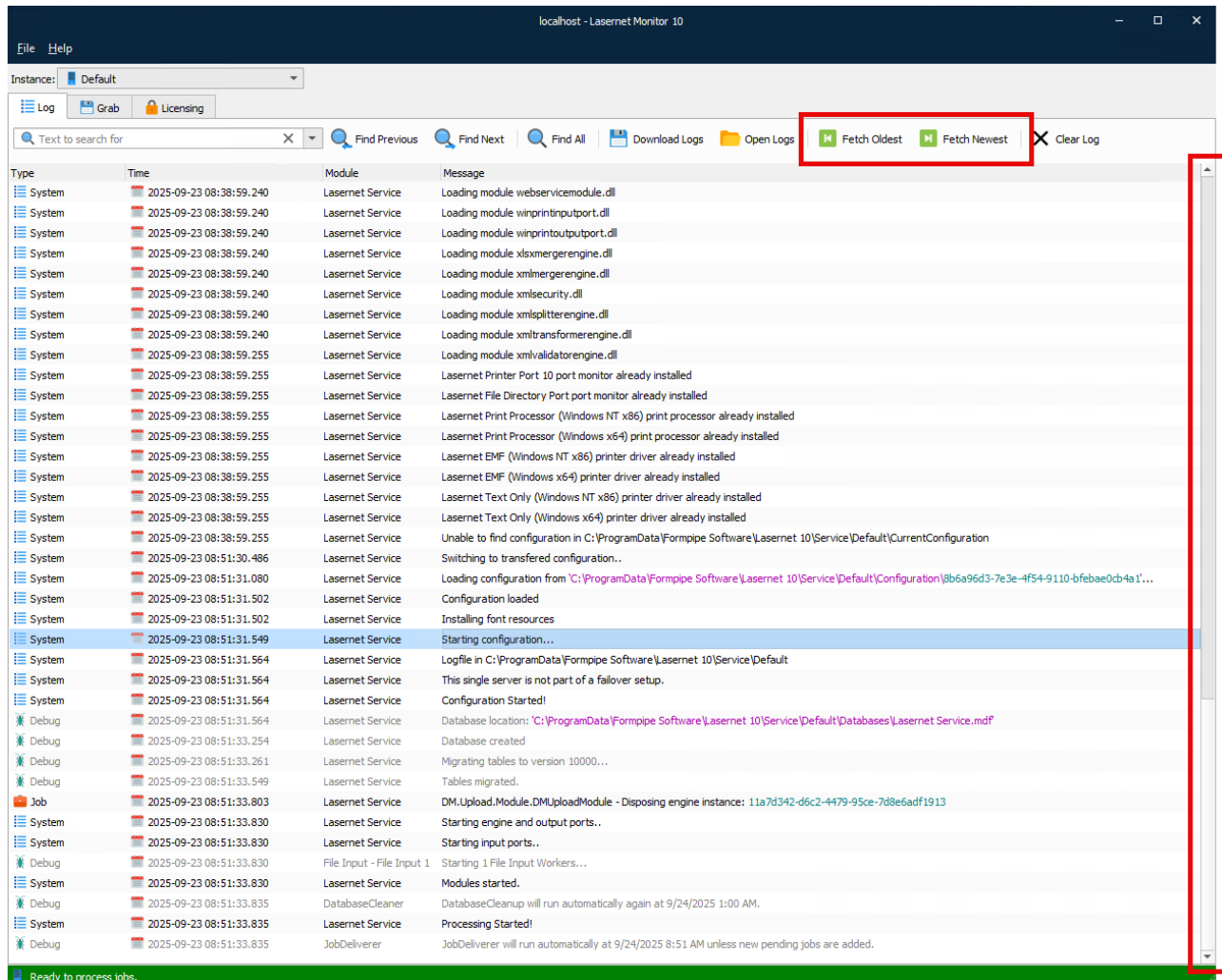
Download Logs

This tool will download the log files from the server/instance to the local computer as a zip file.



Fetch Oldest / Fetch Newest

Click **Fetch Oldest** to scroll the Monitor log to the oldest log present on the server and **Fetch Newest** to show the newest created log messages.



Drag the scroll bar up to fetch the previous log messages or scroll bar down to fetch the next log messages.

Clear Log

Clears log messages from the view.

3.2.6 Tools in the Log Window

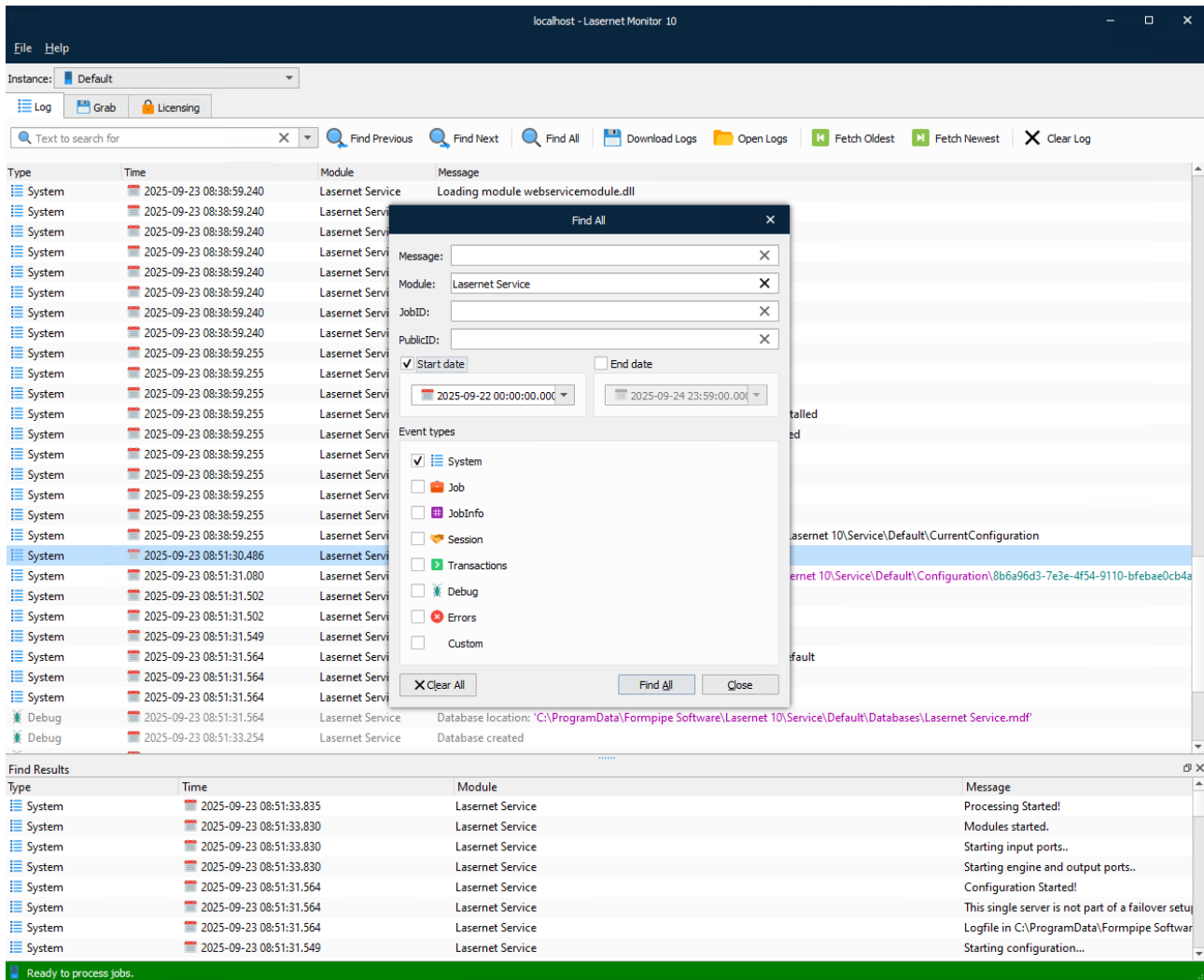
Type	Time	Module	Message
System	2025-09-23 08:38:59.240	Lasernet Service	Loading module webservicemodule.dll
System	2025-09-23 08:38:59.240	Lasernet Service	Loading module winprintinputport.dll
System	2025-09-23 08:38:59.240	Lasernet Service	Loading module winprintoutputport.dll
System	2025-09-23 08:38:59.240	Lasernet Service	Loading module xlsxmergerengine.dll
System	2025-09-23 08:38:59.240	Lasernet Service	Loading module xmlmergerengine.dll
System	2025-09-23 08:38:59.240	Lasernet Service	Loading module xmlsecurity.dll
System	2025-09-23 08:38:59.240	Lasernet Service	Loading module xmlsplitterengine.dll
System	2025-09-23 08:38:59.240	Lasernet Service	Loading module xmltransformerengine.dll
System	2025-09-23 08:38:59.255	Lasernet Service	Loading module xmlvalidatorengine.dll
System	2025-09-23 08:38:59.255	Lasernet Service	Lasernet Printer Port 10 port monitor already installed
System	2025-09-23 08:38:59.255	Lasernet Service	Lasernet File Directory Port port monitor already installed
System	2025-09-23 08:38:59.255	Lasernet Service	Lasernet Print Processor (Windows NT x86) print processor already instal
System	2025-09-23 08:38:59.255	Lasernet Service	Lasernet Print Processor (Windows x64) print processor already installed
System	2025-09-23 08:38:59.255	Lasernet Service	Lasernet EMF (Windows NT x86) printer driver already installed
System	2025-09-23 08:38:59.255	Lasernet Service	Lasernet EMF (Windows x64) printer driver already installed
System	2025-09-23 08:38:59.255	Lasernet Service	Lasernet Text Only (Windows NT x86) printer driver already installed
System	2025-09-23 08:38:59.255	Lasernet Service	Lasernet Text Only (Windows x64) printer driver already installed
System	2025-09-23 08:38:59.255	Lasernet Service	Unable to find configuration in C:\ProgramData\Formpipe Software\Las
System	2025-09-23 08:51:30.486	Lasernet Service	figuration..
System	2025-09-23 08:51:31.080	Lasernet Service	'C:\ProgramData\Formpipe Software\Lasern
System	2025-09-23 08:51:31.502	Lasernet Service	
System	2025-09-23 08:51:31.502	Lasernet Service	
System	2025-09-23 08:51:31.549	Lasernet Service	
System	2025-09-23 08:51:31.564	Lasernet Service	Logfile in C:\ProgramData\Formpipe Software\Lasernet 10\Service\Defa
System	2025-09-23 08:51:31.564	Lasernet Service	This single server is not part of a failover setup.
System	2025-09-23 08:51:31.564	Lasernet Service	Configuration Started!
Debug	2025-09-23 08:51:31.564	Lasernet Service	Database location: 'C:\ProgramData\Formpipe Software\Lasernet 10\Ser
Debug	2025-09-23 08:51:33.254	Lasernet Service	Database created
Debu	2025-09-23 08:51:33.261	Lasernet Service	Miaratina tables to version 10000...

Select **Copy to Clipboard** to copy any message to the clipboard. You can paste the content into other apps.

Filter on This

You can right-click on any column/value in the upper pane, select **Filter on This**, **Filter From**, or **Filter Until**, and the selected value will be captured and inserted in the **Find All** dialog.

You can right click on any line or column and click **Filter on This**. Only lines that contain an exact match in the selected column will be listed in the log window.



You can continue to select more columns to reduce the number of matched lines.

Copy Message

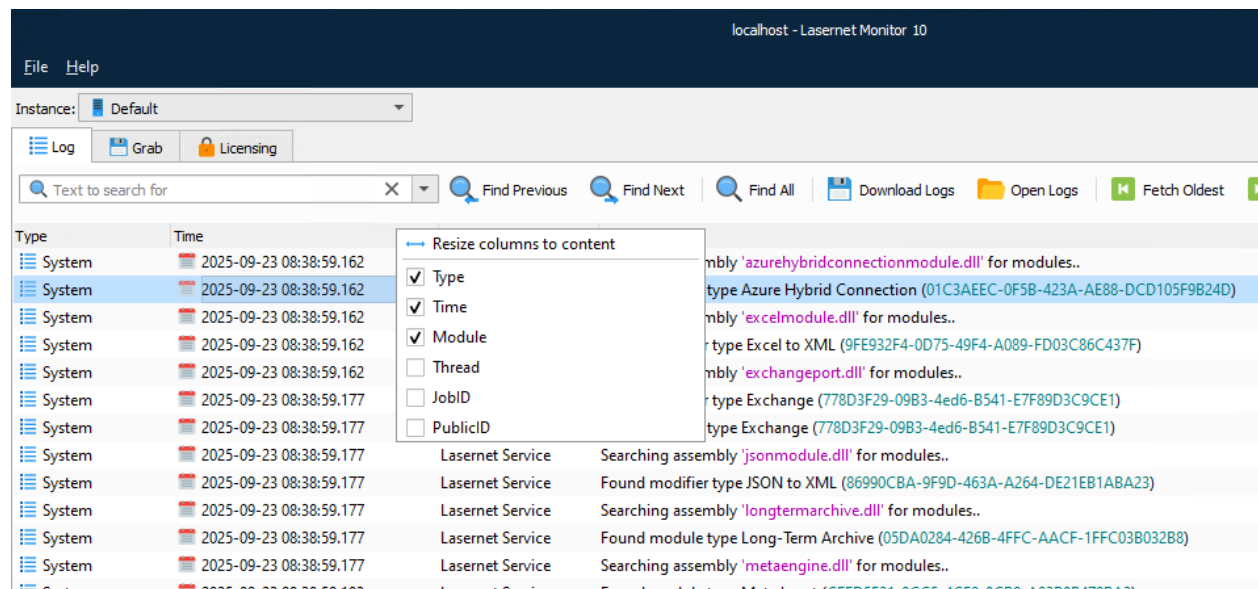
By right clicking on a log line, the message can be copied to the clipboard. Only one line can be selected and copied at the same time.

Clear Log

Clear the currently viewed live log.

3.2.7 Log

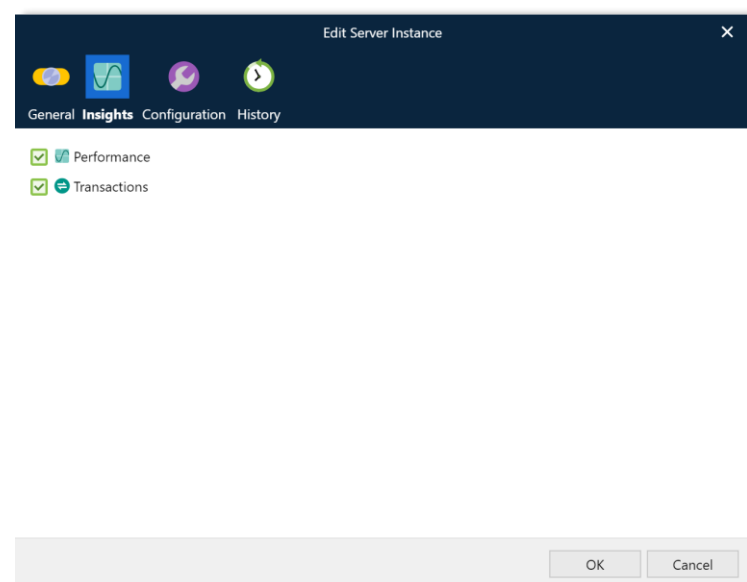
The **Log** tab displays the current log stored on the server for the selected instance.



Right-click on the header of the rows and activate which columns to show in the log. Click **Resize columns to content** to auto align the size of each column base on content for each column.

3.2.8 Insights (Performance and Transaction Counters)

To show Performance and Transactions counters you must log in to the Lasetnet Config Server and activate Insights for each server instance.



Insights will collect system details for the selected server instance when running jobs through Lasetnet. To see this data, start Lasetnet Monitor, select the server instance, then click the **Performance** tab to show system details for the latest 24 hours.

Important: You must manually restart the Lasernetet Server Instance, in the Windows Services app, before the settings will have impact on the selected Lasernetet Server instance.

Information for users of Lasetnet 10.7 and later: Since December 2023, Microsoft Defender has been flagging the LnMonitor.exe software as Trojan:Win32/Znyonm!pz or Phonzy malware. However, this is a "false positive", and Microsoft has confirmed that this is the case.

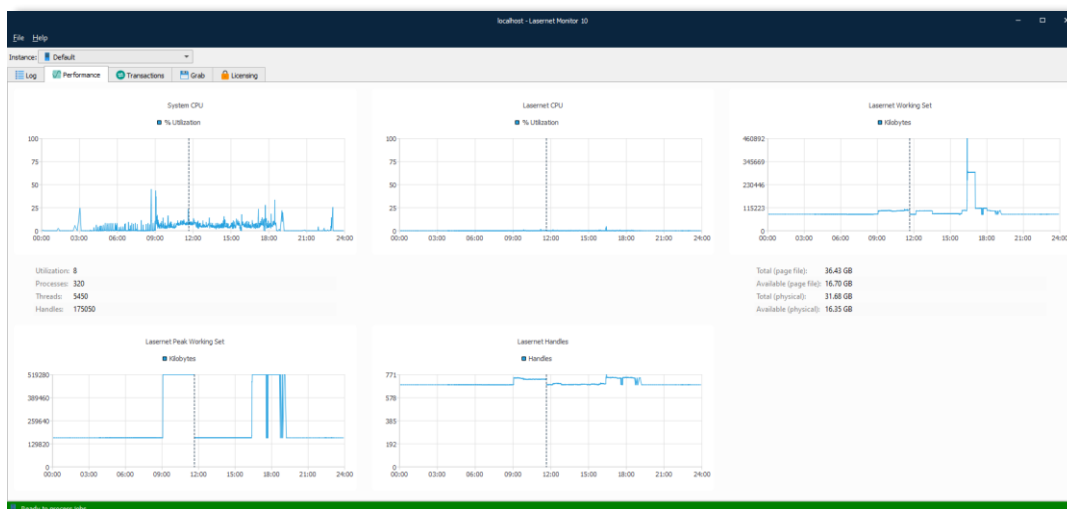
For more information, see: <https://support.formpipe.com/news/posts/lasetnet-monitor-exe-file-detected-as-malware-by-microsoft-defender>

The issue is due to the software that generates the Insights charts on the **Performance** and **Transactions** tabs. To be able to deliver security patches and fixes for users of Lasetnet 10, Formpipe Software has decided to exclude the **Performance** and **Transactions** tabs, and also the functionality embedded in those tabs, from Lasetnet 10.7 onwards to prevent Lasetnet Monitor being flagged as malware.

3.2.9 Performance

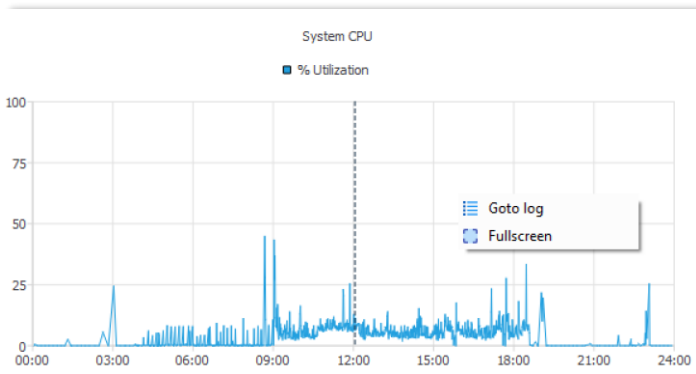
Before reading this chapter, see "Information for users of Lasetnet 10.7 and later" on page 18.

Click the **Performance** tab to view system details for CPU, workset, memory and handles for the latest 24 hours or since last start of Lasetnet service instance.



- Lasetnet CPU
- System CPU
- Lasetnet Workset Set
- Lasetnet Memory Load
- Lasetnet Handles

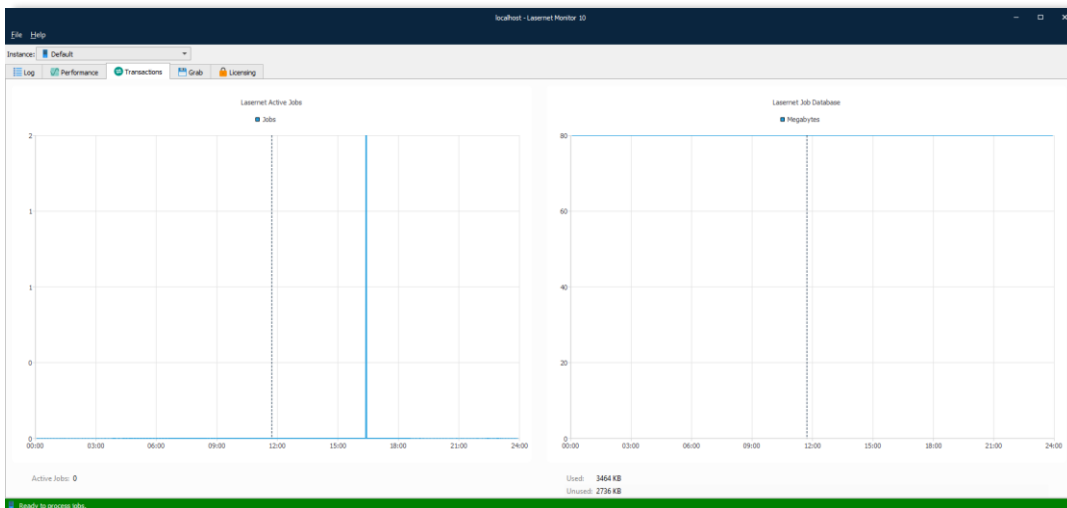
Tip: Right click on a time stamp, in any of the graphs, to go to a specific time event in the Log tab or to show the selected graph in fullscreen mode.



3.2.10 Transactions

Before reading this chapter, see “Information for users of Lasernet 10.7 and later” on page 18.

Click the **Transactions** tab to view system details for number of active jobs running and the size of the job database for the latest 24 hours or since last start of Lasetnet service instance.

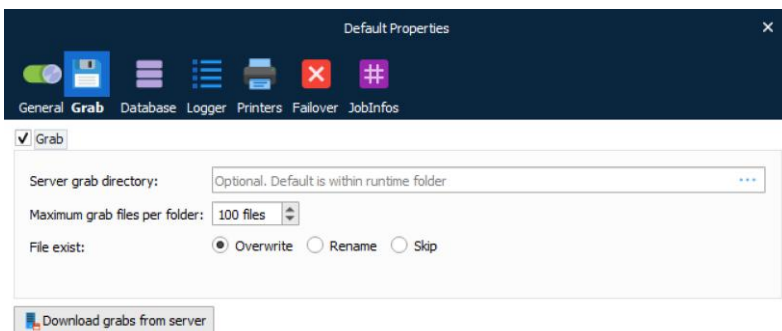


- Lasetnet Active Jobs
- Lasetnet Job Database (Monitor app only)

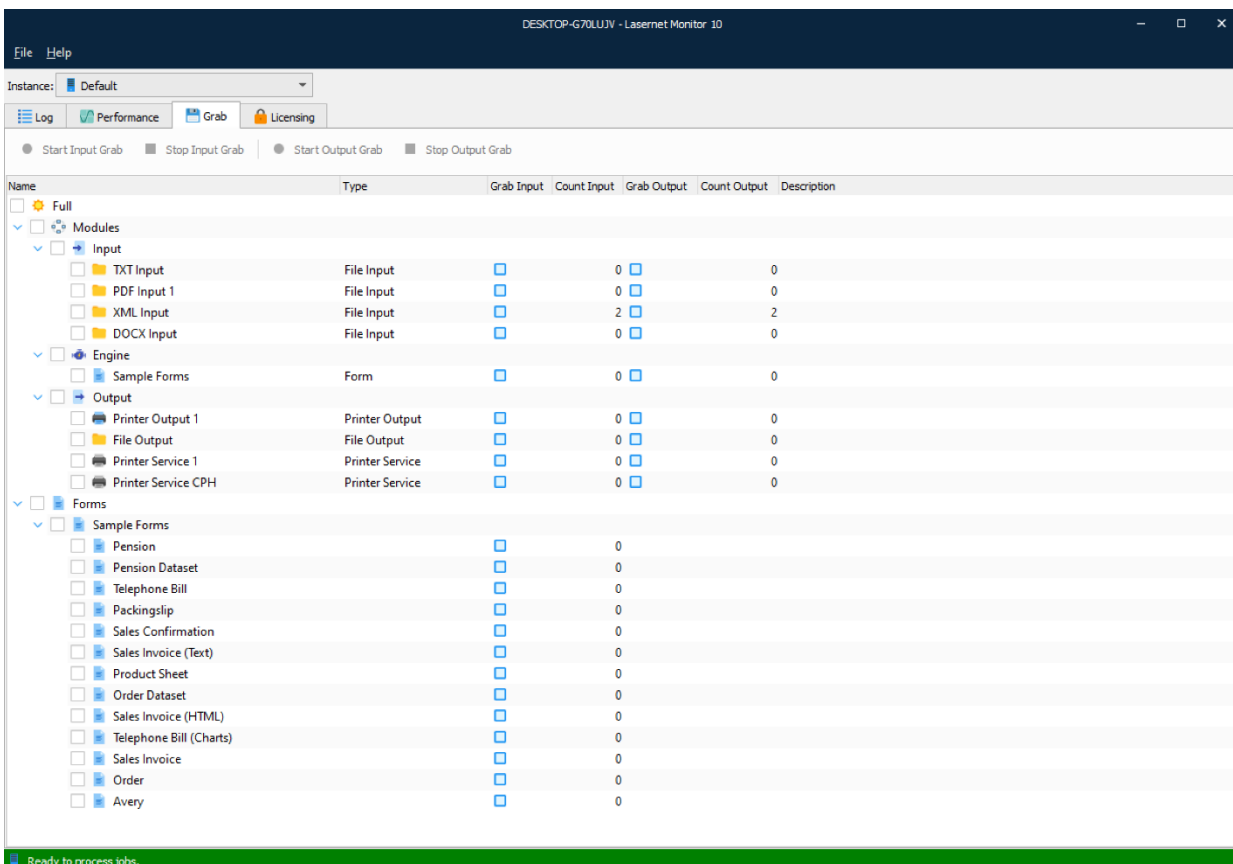
3.2.11 Grab

Grab mode is used by the Lasernet Server to store a copy of the job data in a user defined server grab directory. Grab files are required by the Form Editor as input data for designing forms, or by the XML Transformer Editor to modify XML data. To inspect your job data in more detail, it can be useful store a copy of it before or after it is processed through a module.

When an instance of a Lasernet service is restarted, it will use the default settings as defined in the Lasetnet Developer > **Server** > **Grab** tab. When a configuration is updated to the server with the Grab setting activated, this will be the preferred mode at service start.



On the **Grab** tab of Lasetnet Monitor you can temporarily activate and deactivate grab events for each module and form attached to the Overlay, Form and XML Transformer modules.



Select **Full** to select all modules and forms. Use the Grab toolbar to start and stop the grab mode for selected modules.

Select single or multiple modules or forms. Use the Grab toolbar to start and stop the grab mode for selected modules.

Select checkboxes in the Grab Input or Grab Output column to enable grab for a specific module or form, without using the Grab tool bar.

Columns for Count Input and Count Output will report on how many grab files the Lasernet service instance currently has stored in the grab directory for each module or form.

Grab Tool Bar

The Grab tool bar has buttons to start and stop the grab mode. The monitor does not have to run on the same computer as the Lasetnet service instance to send grab mode signals.



Start Input Grab

This button will start the grab mode for selected modules or forms at grab input level. This level is before a module or form starts to process the job.

Stop Input Grab

This button will stop the grab mode for selected modules or forms at grab input level.

Start Output Grab

This button will start grab mode for selected modules at grab output level. This level is after a module has processed the job.

Stop Output Grab

This button will stop grab mode for selected modules at grab output level.